

SAP S/4HANA Enterprise Management Roadmap

November 12, 2015

Customer



Disclaimers

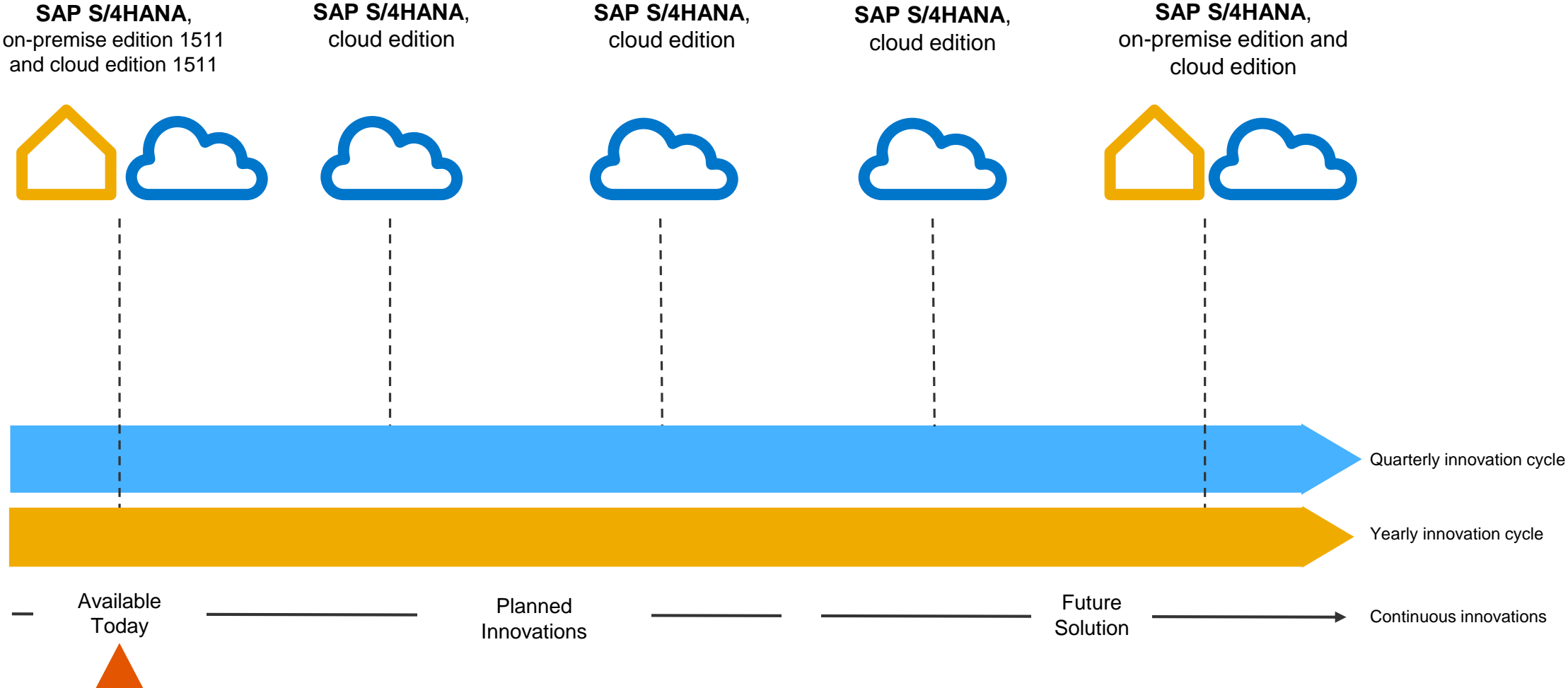
DISCLAIMER

This presentation outlines our general product direction and should not be relied upon in making a purchase decision. This presentation is not subject to your license agreement or any other agreement with SAP. SAP has no obligation to pursue any course of business outlined in this presentation or to develop or release any functionality mentioned in this presentation. This presentation and SAP's strategy and possible future developments are subject to change and may be changed by SAP at any time for any reason without notice. This document is provided without a warranty of any kind, either express or implied, including, but not limited to, the implied warranties of merchantability, fitness for a particular purpose, or noninfringement. SAP assumes no responsibility for errors or omissions in this document, except if such damages were caused by SAP intentionally or grossly negligent.

SAFE HARBOR STATEMENT

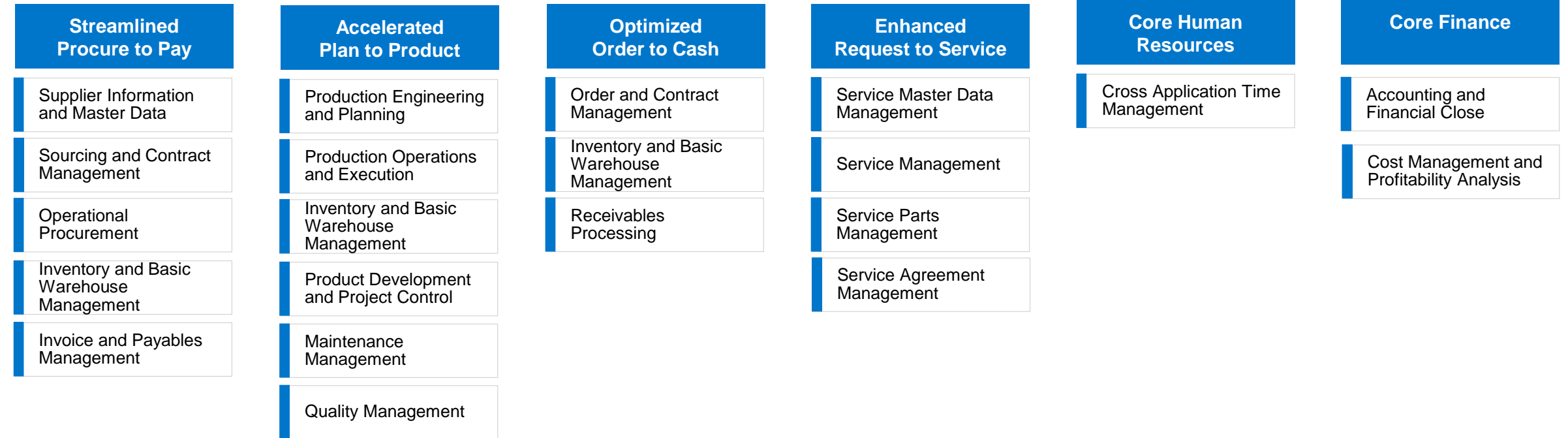
This document is intended to outline future product direction, and is not a commitment by SAP to deliver any given code or functionality. Any statements contained in this document that are not historical facts are forward-looking statements. SAP undertakes no obligation to publicly update or revise any forward-looking statements. All forward-looking statements are subject to various risks and uncertainties that could cause actual results to differ materially from expectations. The timing or release of any product described in this document remains at the sole discretion of SAP. This document is for informational purposes and may not be incorporated into a contract. Readers are cautioned not to place undue reliance on these forward-looking statements, and they should not be relied upon in making purchasing decisions.

SAP S/4HANA delivery schedule

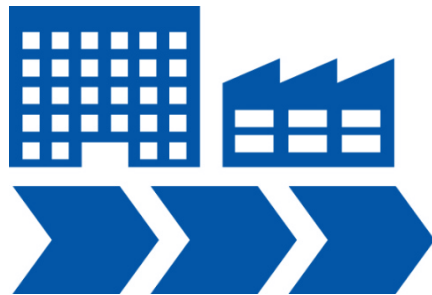


SAP S/4HANA Enterprise Management

Product Roadmap structure



End to End Processes



Streamlined
Procure to Pay

Accelerated
Plan to Product

Optimized
Order to Cash

Procurement

Inventory Management

Production Planning & Execution

Availability to Promise

Product Lifecycle Management

Enterprise Project and Portfolio Mgmt.

Maintenance Management

Quality Management

Order and Contract Mgmt.

Billing and Invoicing

Marketing

Environment, Health & Safety

SAP S/4HANA Enterprise Management Procurement

Streamlined Procure to Pay

- Supplier Information and Master Data
- Sourcing and Contract Management
- Operational Procurement
- Invoice and Payables Management

On-premise and Cloud Edition:

- SAP Fiori Apps for Operational Purchaser
- SAP Fiori Apps for Accounts Payable Accountant
- SAP Fiori Apps for Purchasing Manager
- SAP Fiori Apps for Buyer
- Procure To Pay Real-Time Analytics
- Procure To Pay Search and Object Pages
- Procure To Pay Business Network Integration

On-premise only:

- SAP Fiori Apps for Employee - Procurement
- SAP Fiori Apps for Manager - Procurement
- Procure To Pay Self-Service Requisitioning
- Procure To Pay Supplier and Category Management



On-premise and Cloud Edition:

- Integration for strategic sourcing with Ariba Collaborative Planning & Sourcing
- Extend Business Network Integration
- Enhanced SAP Fiori UI's for Purchase Requisition, Purchase Order, Contract and Invoice processing
- Embedded Analytics

On-premise only:

- Comprehensive Procure-to-Pay support with central Fiori-based overview page for all buyers

Cloud Edition only:

- Simplified Service Procurement and enhanced processes for professional services industry including Fieldglass integration for contingent labor purchasing



On-premise and Cloud Edition:

- Complete end-to-end Business Suite processes covering all industries, all regions and all roles
- Legal contract authoring with integration into operational contract

On-premise only:

- Semantic multi-backend process capabilities. Procurement shared service center via SAP S/4HANA



Solution today

Planned innovations

Future direction

SAP S/4HANA Enterprise Management

Inventory Management

Streamlined
Procure to Pay

Inventory and Basic
Warehouse Management

Accelerated
Plan to Product

Inventory and Basic
Warehouse Management

Optimized
Order to Cash

Inventory and Basic
Warehouse Management

On-premise Edition and Cloud Edition

- Real-time inventory management through redesigned data model in SAP S/4HANA
- Simplified material valuation to enable parallel inventory posting for standard price driven materials
- SAP Fiori Apps for Inventory Manager
- SAP Fiori Apps for Warehouse Clerk

On-premise and Cloud Edition:

- Enhancement of SAP Fiori Apps for Inventory Manager and Warehouse Clerk in SAP S/4HANA
- New SAP Fiori App for Inventory Manager
- MM-IM SAP S/4HANA: Performance Optimization for Goods Movements
- Enhancement of Object Page

On-premise and Cloud Edition:

- Simplified material valuation to enable parallel inventory posting for moving average price driven materials
- New SAP Fiori Apps for Inventory Manager, Warehouse Clerk and Inventory Analyst in SAP S/4HANA
- Catch Weight Management (CWM) Integration into Core

Solution today

Planned innovations

Future direction

SAP S/4HANA Enterprise Management

Production Planning & Production Execution

Accelerated
Plan to Product

Production Engineering and
Planning

Production Operations and
Execution

On-Premise and partially Cloud Editions:

- SAP Fiori Apps for Material Requirements Planning (MRP Cockpit)
 - Manage and Monitor External and Internal Requirements
 - Manage and Monitor Material Coverage
 - Monitor Production or Process Orders
 - Change Requests
- Accelerated Material Requirement Planning (MRP run) in SAP S/4HANA
- Further Production Planning (PP) and MRP adoption for SAP S/4HANA such as replacement for the logistics information system

On-Premise Edition:

- Integrated Production Planning and Detailed Scheduling (PP/DS) in SAP S/4HANA
 - Advance planning and optimization and production planning and detailed scheduling
 - Live cache-based, finite-capacity planning as an integral part of SAP HANA, requiring just one database to manage
 - Advanced analytics
 - One materials requirements planning
 - Simplified data integration
 - Intuitive maintenance of master data and integration models

On-Premise Edition:

- New graphical planning board for PP and DS
- Shop Floor Cockpit (New Fiori Apps for Production Supervisor)
- Visual Manufacturing Planner
- Visual Asset Management

Solution today

Planned innovations

Future direction

SAP S/4HANA Enterprise Management

Advanced Available to Promise (ATP)

Accelerated
Plan to Product

Production Operations and
Execution

Optimized
Order to Cash

Order and Contract
Management

On-premise Edition

- SAP HANA-enabled mass product availability check for sales-, planned- and production-orders.
 - ATP check for all items of an order at once
 - Significant performance improvements for releasing large production orders

On-premise and Cloud Edition

- SAP Fiori App “Release for Delivery” for Delivery Manager
 - Decide which sales orders should be part of the next delivery wave

On-premise and Cloud Edition:

- Backorder Processing (BOP)
 - Improved flexibility in Backorder processing
 - Simplified setup thanks to parameters aligned with business requirements
- Sales Product Allocation
 - Product Allocation Check for sales rules such as fair share, ranked or prioritized share
 - Simplified product allocation data maintenance (SAP Fiori Apps)

Solution today

Planned innovations

Future direction

SAP S/4HANA Enterprise Management

Product Lifecycle Management (PLM)

Accelerated
Plan to Product

Product Development and
Project Control

On-premise Edition:

- Production version based on Bill of Material data
- DMS Integration with Mobile Documents

Cloud Edition:

- Attachment services

On-premise Edition:

- SAP Fiori App to maintain Bill of Material
- SAP Fiori Recipe Development Apps for Recipe Developer
- Simplified DMS: HTML5 based document up- and download
- Enhancements for Product Structure Management: Integrated bill of material into product structure management

On-Premise and Cloud Editions:

- Bill of Material (BOM) simplification (SAP Fiori)
- Integrated BOM and routing (SAP Fiori)
- Simplified classification (SAP Fiori)
- Simplified document management (SAP Fiori)
- New Process: Handling Embedded Software and Systems Engineering

On-Premise Edition:

- Enable CAD Integration with SAP Engineering Control Center integration
- New Roles supported for Development Manager
- Enhancements for Recipe Developer (Recipe Finder, Change Simulation)
- Target-Driven Recipe Development, Product compliance Check with integration to cloud based content platforms (SAP Fiori)
- Enhanced recipe analytics (SAP Fiori)

Solution today

Planned innovations

Future direction

SAP S/4HANA Enterprise Management

Enterprise Portfolio and Project Management

Accelerated
Plan to Product

Product Development and
Project Control

On-premise Edition:

- SAP Fiori apps for Project Financial Controller and Project Logistics Controller

Cloud Edition:

- Creation of project accounting structures in Project System with SAP Fiori Launchpad via HTML GUI
- Continuous improvement of Release Billing Proposals SAP Fiori app for project based services

On-Premise Edition:

- Object pages and overview SAP Fiori apps for Project System objects
- Enablement of selected analytical apps for Project System
- SAP Enterprise Project Connection* for SAP S/4HANA

Cloud Edition:

- Extended Release Billing Proposals SAP Fiori app for project based services

On-Premise Edition:

- SAP Enterprise Portfolio and Project Management* for simplified management of projects and project portfolios including SAP Fiori roles for program / project managers, team members, project accounting
- SAP Fiori app for project accounting structure creation and additional analytical and transactional SAP Fiori apps for Project System

Cloud Edition:

- Enablement of analytical Project System on-premise SAP Fiori apps for Project Financial Controller
- Continuous improvement of Release Billing Proposals SAP Fiori app for project based services

Solution today

Planned innovations

Future direction

* Refers to Add-On products

SAP S/4HANA Enterprise Management

Maintenance Management

Accelerated
Plan to Product

Maintenance Management

Cloud and On-Premise Edition:

- Enable end to end maintenance planning and execution functions using Webdynpro application with Fiori Launchpad

On-premise Edition:

- SAP Fiori apps for Employee - to create and track request for maintenance
- Object pages and overview SAP Fiori apps for Technical Objects and Notification

On-premise Edition:

- SAP Fiori app for Maintenance Technician to report and manage malfunction
- Object pages and overview SAP Fiori apps for Order, Order confirmation, Task List, Maintenance Plans, Measurement Points and Measurement Documents, Material
- Simplified reporting and monitoring of asset performance allowing insight to action
- Simplified Master Data
- Improved management of geographically distributed asset with integration of GIS solution with asset
- Geospatial enablement of asset management business processes
- Visual Asset Management
- Cloud-based applications for transactional and collaborative scenarios
 - Asset Information Network

Solution today

Planned innovations

Future direction

SAP S/4HANA Enterprise Management

Quality Management (QM)

Accelerated
Plan to Product

Quality Management

On-Premise Edition:

- Core SAP Quality Management (QM) Processes
 - Quality Engineering
 - Quality Inspection
 - Quality Improvement

On-Premise Edition:

- New SAP Fiori Launchpad for the role Quality Technician
- SAP Fiori app “Recording Results” for role Quality Technician
- Option to search for important quality related objects
- Object pages for a wide range of quality objects
- New work lists for important quality related objects such as Inspection lots etc.

On-Premise Edition:

- New SAP FIORI Launchpad for the following roles:
 - Quality Manager, Quality Engineer, Quality Planner, Quality Auditor, Calibration Technician
- Additional object pages for a wide range of quality objects
- Additional work lists for important quality related objects
- CDS views replacing SAP Quality Management Information System (QMIS)
- Simplified Test Equipment Management

Solution today

Planned innovations

Future direction

SAP S/4HANA Enterprise Management

Order and Contract Management (SD/CRM)

Optimized
Order to Cash

Order and Contract
Management

On-Premise Edition:

- Service-Provider Contract Management using SAP CRM Side-by-Side
- Order Management for Solution Bundles using SAP CRM Side-by-Side

Cloud Edition:

- Sell-from-stock process
 - Simplify and streamline business requirements
 - Seamlessly integrate and simplify business processes through integrated SAP ERP master data and optimized process flows
- Sales Order Fulfillment Monitor, which allows you to resolve issues that impede sales orders from being fulfilled

Cloud Editions:

- Enhancement SAP Fiori Apps for Internal Sales Representative
 - Factsheets displays contextual information about the sales document (The following Factsheets are planned: Sales Order, Credit Memo Request, Debit Memo, Request, Quotation and Customer Contract)
 - Planned transactional apps: Manage Sales Orders, Manage Credit Memo Requests, Manage Debit Memo Requests, Manage Quotations and Manage Customer Contracts
 - Enhancements to the Sales Order Fulfillment Monitor, which allows you to resolve issues that impede sales orders from being fulfilled
 - New Output Management for sales documents
- Enhancement SAP Fiori Apps for Claims, Returns & Refunds Clerk
 - The Customer Return Factsheet displays contextual information about the billing document. You can navigate to its related business objects and access related transactions in operational systems.
 - With the transactional apps Manage Customer Returns and Manage My Complaints, you can create, modify or display customer returns resp. your complaints.

On-Premise and Cloud Editions:

- Further Enhancements for SAP Fiori User-Experience for Main Sales User Roles
 - Internal Sales Representative
 - Claims, Returns & Refunds Clerk
 - Sales Manager
- CDS-based analytics replacing SAP ERP Sales-Information-System (SIS) and SAP HANA Live

Solution today

Planned innovations

Future direction

SAP S/4HANA Enterprise Management

Billing and Invoicing (SD / hybris Billing)

Optimized
Order to Cash

Order and Contract
Management

On-Premise Edition:

- SAP Fiori Apps for Billing Clerk (SD)
 - Scheduling output of billing documents
 - Possibility to run the output of billing documents in the background.
- Convergent Invoicing and FI-CA
- SAP Fiori apps for Invoicing Manager (Convergent Invoicing)
 - View unbilled revenue
- SAP Fiori apps for accounts payable/receivable manager (FI-CA)
 - Planned real-time consolidations and visibility into focus areas for key performance indicators (KPIs) from FI-CA: Payment locks, Dunning locks, Clearing locks, Posting locks, Statistics on open clarification lists

Cloud Edition:

- SAP Fiori Apps for Billing Clerk (SD)
 - Scheduling output of billing documents
 - Possibility to run the output of billing documents in the background

Cloud Edition:

- Enhancement SAP Fiori Apps for Billing Clerk (SD)
 - The Billing Document Factsheet displays contextual information about the billing document. You can navigate to its related business objects and access related transactions in operational systems

On-Premise Edition:

- SAP Fiori apps for Customer Operator (Convergent Invoicing)
 - Correction of invoicing information in SAP Convergent Invoicing including for example correction of invoiced amount or tax amount.

On-Premise and Cloud Editions:

- SAP Fiori only User-Experience for Role Billing Clerk (SD)

On-Premise Edition:

- Additional role-specific user interfaces with simplified user experience: Pricing, design, monitoring (hybris Billing)

Solution today

Planned innovations

Future direction

SAP S/4HANA Enterprise Management

Marketing

Cloud Editions:

- Data management: accounts and contacts, interactions, products, product hierarchies, customer scoring, sentiment engagement and trends, customer journey visualization
- Segmentation: Multidimensional segmentation, dynamic target groups, +
- Acquisition: Calendar, campaign automation, success analysis, e-mail, landing pages
- Recommendation: Product, omnichannel modeling, behavior-based recommendation
- Planning: Budget and spend planning, calendar
- Integration with SAP products: SAP ERP, SAP Cloud for Customer

Cloud Editions:

- Data management: Sales Analysis, journey intelligence, Social Integration, Loyalty Integration, hybris commerce integration
- Acquisition: Facebook Campaign, e-Mail provider service, SMS
- Segmentation: Predictive
- Planning: Spend management integration with SAP ERP
- Extensibility

Cloud Editions:

- Data management: Relationship, Whitespace Analysis
- Acquisition: Digital Asset Management integration, Paid Search Campaigns
- Offer recommendation

Solution today

Planned innovations

Future direction

SAP S/4HANA Enterprise Management

Environment, Health and Safety (EHS)

On-Premise Edition:

- Incident Management
- Health and Safety Management
- Product safety, dangerous goods, global label management
(*compatibility product*)
- Product compliance, discrete industries
(*compatibility product*)

HCP side by side with SAP S/4HANA

- SAP Cloud for Product Stewardship
- manage product compliance

On-Premise Edition:

- EHS Launchpad
- Incident Management Analytics
- Incident on any device app
- Lean Risk Assessment Process
- Risk and Control Survey
- Integration dangerous goods with SAP Extended Warehouse Management (EWM)

HCP side by side with SAP S/4HANA

- SAP Cloud for Product Stewardship
- manage supplier material
- Integration into SAP S/4HANA

On-Premise and Cloud Editions:

- Environment Management
- Simplification of incident management, risk assessment and management of change processes
- Integrated sustainability reporting with SAP S/4HANA Finance
- Global label management with manufacturing
- Integration dangerous goods with SAP Transportation Management (TM)
- Integration product safety with SAP S/4HANA Materials Management & Operations
- Integration of product compliance with SAP Product Lifecycle Management (PLM)

HCP side by side with S/4HANA:

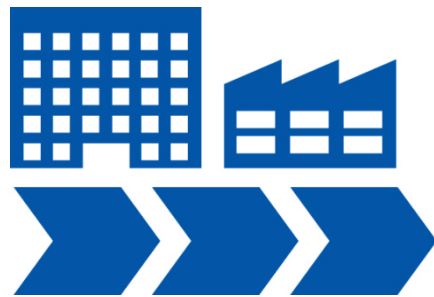
- SAP Cloud for Product Stewardship
- manage product safety and dangerous goods
- ecosystem enabled content and service platform for EHS and Product Safety and Stewardship (PSS)

Solution today

Planned innovations

Future direction

Core Finance



Core Finance

Accounting and
Financial Close

Cost Management and
Profitability Analysis

Financial planning and analysis

Accounting and financial close

Treasury and financial risk
management

Collaborative finance operations

Enterprise risk and compliance
management

SAP S/4HANA Enterprise Management

Financial planning and analysis

Core
Finance

- SAP Accounting
- SAP Integrated Business Planning solution, for finance
- SAP Fiori apps and enriched mobile experience
- SAP Smart Business cockpit, executive edition

- Additional SAP Fiori apps for controller
- Extensions to SAP Integrated Business Planning optimized for SAP S/4HANA Finance
- Improved planned and actual reporting
- Enhanced planning capabilities
- Enhanced collaboration, control, and monitoring capabilities
- Digital Boardroom
- Budget management

- Completion of SAP Fiori renewal
- Embedded forecasts with prediction
- Embedded simulation
- Unified approach to cost allocation (for actuals and plan)

Solution today

Planned innovations

Future direction

SAP S/4HANA Enterprise Management

Accounting and financial close

-
- SAP Accounting with universal journal
 - Accelerated financial close
 - SAP Fiori apps for general ledger accountants, including record and report
 - SAP Revenue Accounting and Reporting application
 - Intercompany reconciliation
 - SAP S/4HANA Finance, central finance foundation, deployment option
 - SAP Lease Administration application by Nakisa
- Further enhancements for SAP Accounting
 - Additional SAP Fiori apps for general ledger and asset accountant
 - New reporting capabilities
 - IFRS compliant revenue accounting (optimized processes)
 - IFRS compliant lease accounting
 - Enhanced consolidation in SAP Business Planning and Consolidation
 - SAP S/4HANA Finance, central finance foundation – further enhancements for corporate reporting
 - Near-zero downtime migration
- Completion of SAP Fiori renewal
 - Enablement of activation of balance sheet split logic and parallel ledgers
 - Adaptation to changing IFRS and FASB requirements
 - Completion of real-time close and soft close, including consolidation
 - Unified approach to cost allocation (for actuals and plan)
 - Further capabilities for SAP S/4HANA Finance, central finance foundation
 - Embedded forecasts with prediction
 - Embedded simulation
 - Enhanced integration with HR and SuccessFactors solutions

Solution today

Planned innovations

Future direction

SAP S/4HANA Enterprise Management

Treasury and financial risk management

- SAP Cash Management powered by SAP HANA – cash management, liquidity management, bank account management
- SAP Treasury and Risk Management application – IFRS 9 first parts
- SAP Treasury and Risk Management – new yield curve framework, cash flow at risk
- SAP Fiori apps for cash managers
- One Exposure



- Further enhancements to SAP Cash Management powered by SAP HANA
- More information sources integrated to One Exposure and consumer applications
- Further improvements of bank relationship management
- IFRS 9
- Trade Finance
- Further SAP Fiori coverage



- SAP Fiori apps for treasurers
- Trade Finance
- Electronic Bank Account Management
- Predictive liquidity forecast
- Bank Fee Analysis

Solution today

Planned innovations

Future direction

SAP S/4HANA Enterprise Management

Collaborative finance operations

Core
Finance

-
- SAP Real Estate Broker mobile app, SAP Smart Business, executive edition for real estate, e-invoicing enablement, simulation of lease valuation
 - Receivables management – SAP Fiori apps for collections, dispute management
 - Payables management – SAP Fiori apps for accounts payable manager, accounts payable accountant, and integration with the Ariba Network
- Additional SAP Fiori apps for receivables management
 - Additional SAP Fiori apps for payables management – for example, check management and invoice automation
 - Integration with the Ariba Network for payables management
 - Enhanced centralization capabilities for Central Finance deployment option
 - SAP HANA Cloud Platform Apps
 - Visual space management with SAP Real Estate Management and SAP 3D Visual Enterprise applications
- Completion of SAP Fiori renewal
 - SAP Ariba Network – end-to-end integration between buyer and supplier
 - Further network capabilities – for example, e-invoicing, supplier portal
 - Integration with SAP AribaPay solution
 - Supply chain finance, support for factoring and reverse factoring (via the business network)
 - Enhanced integration with Concur solutions

Solution today

Planned innovations

Future direction

SAP S/4HANA Enterprise Management

Enterprise risk and compliance management

- Enhancements to SAP Access Control, SAP Process Control, and SAP Risk Management applications and SAP Fraud Management analytic application
- “Three lines of defense” model
- SAP Regulation Management application by Greenlight
- SAP Access Violation application Management by Greenlight
- SAP Dynamic Authorization Management application by NextLabs and SAP Technical Data Export Compliance application by NextLabs



- Advanced reporting and analytics
- Platform innovations
- Comprehensive governance, risk and compliance (GRC) initiatives management
- Identity and access governance
- Extended fraud management
- Business partner screening
- SAP (Internal) Audit Management



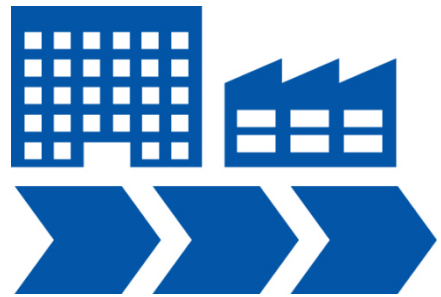
- Embedded GRC – full integration of GRC into company processes and systems
- Intuitive automation – central cockpit for all automation needs, pre-visualization of the results, preventive monitoring, threat-and-risk-based access governance
- Consumable – modular approach to solutions, personalized interface, and access to information anytime and anywhere

Solution today

Planned innovations

Future direction

Core Human Resources



Core Human Resources

Core Human
Resources

SAP S/4HANA Enterprise Management

Core Human Resources (HR)

On-premise Edition:

- Employee integration for SAP S/4HANA, on premise edition: Core Data Services (CDS) views of the employee and employment data provided in support of the HR employee data model for the on premise edition of SAP S/4HANA

Cloud Edition:

- Employee Integration for SAP S/4HANA, cloud edition: Employee availability plus integration of external workforce from SAP SuccessFactors Employee Central

On-premise Edition:

- Employee integration: Calendar-based timesheet for multiple accounting objects for SAP S/4HANA, with access and integration for contingent workers

Cloud Edition:

- Employee integration: Calendar-based timesheet for multiple accounting objects for SAP S/4HANA, with access and integration for contingent workers

On Premise and Cloud edition

- Timesheet:
 - New flexible calendar based Timesheet for all accounting objects, incl. embedded KPI's
 - Approval of recorded times for Managers and Project Leads via Fiori Inbox
- Employee Integration
 - Enablement of a skill based search from SAP SuccessFactors on Employees for e.g. staffing in SAP S/4HANA
 - Manage generated PERNR keys in sub-systems within Employee Central (EC) to safeguard stable PERNR across multiple systems.
 - Total Workforce Integration for S/4HANA with SAP Fieldglass, SAP SuccessFactors EC, SAP ERP HCM, Ariba for the integration of Contingent Workforce

On Premise edition

- Contingent Workforce integration via SAP HCM, including supplier assignment and purchase order assignment
- Support the existing on cloud "Contingent Worker integration " of EC also for SAP S/4HANA on-premise

Cloud edition

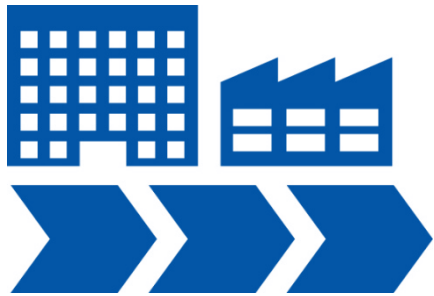
- Interface Payroll Postings to SAP S/4HANA Finance Cloud
- Integration of Supplier data from SAP S/4HANA to EC to support the contingent worker assignments in SAP SuccessFactors EC

Solution today

Planned innovations

Future direction

Cross Topics



Cross Topics

Integration Supply Chain
Products

Integration CRM & C4C

Cross Topics

Analytics

Extensibility

SAP S/4HANA Enterprise Management

Integration into Supply Chain products

Cross Topics

Integration

On-premise Edition:

- SAP Advanced Planning and Optimization (APO) (including SAP APO global ATP (gATP)), SAP Supply Network Collaboration (SNC), and SAP Service Parts Planning (SPP) connected to SAP S/4HANA side-by-side
- SAP Integrated Business Planning (IBP) connected to SAP S/4HANA via SAP Hana Cloud Integration (HCI)
- SAP Enterprise Warehouse Management (EWM) connected to SAP S/4HANA side by Side.
- SAP Transportation Management (TM) connected to SAP S/4HANA side-by-side



On-premise Edition:

Integration to further processes into SAP Integrated Business Planning (IBP) (Cloud) :

- Advanced demand planning capabilities
- Order-based supply planning
- Enhanced response management
- Segmentation optimization
- Industry-specific processes
- Collaborative business network planning

SAP Extended Warehouse Management (EWM) as integral part of SAP S/4HANA (replacing LE-WM), with:

- Full industry support in SAP S/4HANA
- Planning enhancements for retail / e-commerce
- Integration with load optimization



Solution today

Planned innovations

Future direction

SAP S/4HANA Enterprise Management

Cross Topics

Integration

Integration with SAP Customer Relationship Management (CRM) and SAP Cloud for Customer (C4C)

- Full SAP Customer Relationship Management (CRM) backward compatibility and industry support with SAP CRM side-by-side deployment to SAP S/4HANA On-premise Edition
- Visual harmonization with Fiori Skin for SAP CRM WebUI
- C4C integration to SAP S/4HANA on-premise and cloud edition
 - Bi-directional integration of business partners
 - Material replication from S/4HANA to C4C
 - Create a S/4HANA sales order out of a C4C opportunity

- C4C integration to SAP S/4HANA on-premise edition
 - Full scope (same as SAP ERP integration)
- C4C integration to SAP S/4HANA cloud edition
 - Enhancements to sales integration scenario

- SAP hybrid Customer Engagement Center for SAP S/4HANA

Solution today

Planned innovations

Future direction

Cloud and On Premise Edition

Identity and Access Management
(Cloud only)

Job Scheduling & Monitoring

Search & Object Browser

Output Management

Attachments Services

Cloud and On Premise Edition

Fully qualified Business Catalog Roles are assigned by Key User via SAP Fiori app to business User.
Assigned SAP Fiori Catalogs are exposed and ready to be used.

Technical jobs are scheduled automatically based on available Metadata.
Business Jobs (like Billing Run) can be scheduled and monitored via SAP Fiori UI

All relevant Business Entities are being enabled for easy search. Object Browser are established as standard view for these Business Entities and allow actions and further navigation

New Output Management with state of the art Output Forms based on Adobe Document Server.
Fiori Reuse Component for the respective Settings Dialog. Output Determination based on BRF+

New Attachments Service with specialized cloud persistence introduced (configurable). Document data are stored in SAP mobile documents infrastructure which is integrated to KPRO

Cloud and On Premise Edition

Group Business Catalog Roles to Business Roles. Business Roles based on Job Catalog information are assigned automatically. Customer can use Restriction Types in Roles for flexible authorization (display only, department views, etc.)

Support Job Chains in order to reflect job dependencies. Extended Job Monitoring and Job Result Views

Extended capabilities of Object Browser towards Coverage and quick actions

Extend business coverage of New Output Management
Extend support Output Channels
Apply Branding Capabilities

Extend business coverage of new Attachments Service
Enable Attachments Service for document viewing on mobile devices

Solution today

Planned innovations

Future direction

SAP S/4HANA Enterprise Management

Cross Topics - Analytics

Cross Topics

Enterprise Technology

Cloud and On Premise Edition

IT User

- Maintain Core Data Services (CDS) views in ABAP for Eclipse

Analytics Key User

- Create new KPI Tiles using existing KPIs
- Create Query Views

Analytics End User

- Query Browser
- Multidimensional reporting
- KPIs, Smart Business Applications
- Specific analytical apps (CEI, FIN)
- Analysis for Office (on premise only)
- Lumira (acquisition mode, on-premise)

Business Content

- ~ 2300 Open CDS Views
- Reports: FIN, Sales and Distribution (SD), Commercial Project Management (CPM)
- KPIs: areas above + Material Management (MM), Production Planning (PP)

Cloud and On Premise Edition

IT User

- Create/extend CDS views

Analytics Key User

- Manage report assignments
- Create new KPIs

Analytics End User

- Overview Pages
- UI-Embedded Analytics
- Analysis Path Framework

Business Content

- Further Views, KPIs, Reports to cover SAP S/4HANA scope

Cloud and On Premise Edition

IT User

- Create planning functions

Analytics Key User

- Define planning models

Analytics End User

- Excel integration
- KPI & Report Gallery

Business Content

- Further Views, KPIs, Reports to cover SAP S/4HANA scope

Solution today

Planned innovations

Future direction

Cloud and On Premise Edition

Side-by-Side Extensibility use SAP HANA Cloud Platform

- limitations, e.g. only technical user
- See HCP Roadmap

In-App Extensibility for Key Users through built-in capabilities

- Field Extensibility (Custom fields)
- UI Flexibility (hide, move, add fields, change labels) for SmartControls
- Report extensibility, new reports
- Business logic extensibility (Code breakouts)
- Forms extensibility (Print forms and e-mail templates)

Cloud and On Premise Edition

Side-by-Side Extensibility use SAP HANA Cloud Platform (HCP)

- with end-to-end processes of Identity Management & SSO

In-App Extensibility for Key Users through built-in capabilities

- UI Flexibility for non-smart controls
- Table extensibility: Custom tables for Cloud Marketing Edition

Managed Extensibility (Cloud only)

- Custom Code Migration Tool incl. cloud readiness checks
- Development Tools for customer/partner Add-ons based on public APIs

Cloud and On Premise Edition

Side-by-Side Extensibility with custom OData Services

- Enable customers/partners to easily create new SAP S/4HANA OData services from CDS Views in the SAP WebIDE (Integrated Development Environment) with HCP lifecycle management

In-App Extensibility for Key Users through built-in capabilities

- Table extensibility: custom tables, custom objects, custom child tables to SAP objects
- Custom CDS views

Solution today

Planned innovations

Future direction

Industry enablement

SAP S/4HANA Enterprise Management

Industry Roadmap (on-Premise)

All Industries released for SAP S/4HANA Finance

SAP S/4HANA in Materials Management and Operations¹⁾

19 Industries released

12 Industries with full coverage

- Chemicals
- High-Tech
- Industrial Machinery & Components
- Insurance
- Life Sciences
- Mill Products
- Mining
- Sports & Entertainment
- Telco
- Travel & Transportation
- Utilities
- Wholesale

7 Industries with major coverage²⁾

- Aerospace & Defense
- Automotive
- Banking
- Consumer Products
- Engineering, Construction & Operations
- Prof. Services
- Public Sector

21 Industries released

+2 Industries released

- Defense
- Higher Education & Research

+ 4 Industries now with full coverage

- Aerospace & Defense
- Automotive
- Engineering, Construction & Operations
- Public Sector

24³⁾ Industries released

+3 Industries released including simplifications

- Healthcare
- Retail
- Oil & Gas

+ First simplifications in released industries

- e.g. Public Sector

+ Release of additional industry scenarios

Solution today

Planned

Future

¹⁾ SAP S/4HANA Manufacturing, SAP S/4HANA Sales, SAP S/4HANA Supply Chain, and SAP S/4HANA Sourcing & Procurement

³⁾ Roadmap for Media still being defined

²⁾ Restrictions based on selected industry specific scenarios like CWM, DSD, ...

© 2015 SAP SE or an SAP affiliate company. All rights reserved.

No part of this publication may be reproduced or transmitted in any form or for any purpose without the express permission of SAP SE or an SAP affiliate company.

SAP and other SAP products and services mentioned herein as well as their respective logos are trademarks or registered trademarks of SAP SE (or an SAP affiliate company) in Germany and other countries. Please see <http://global12.sap.com/corporate-en/legal/copyright/index.epx> for additional trademark information and notices.

Some software products marketed by SAP SE and its distributors contain proprietary software components of other software vendors.

National product specifications may vary.

These materials are provided by SAP SE or an SAP affiliate company for informational purposes only, without representation or warranty of any kind, and SAP SE or its affiliated companies shall not be liable for errors or omissions with respect to the materials. The only warranties for SAP SE or SAP affiliate company products and services are those that are set forth in the express warranty statements accompanying such products and services, if any. Nothing herein should be construed as constituting an additional warranty.

In particular, SAP SE or its affiliated companies have no obligation to pursue any course of business outlined in this document or any related presentation, or to develop or release any functionality mentioned therein. This document, or any related presentation, and SAP SE's or its affiliated companies' strategy and possible future developments, products, and/or platform directions and functionality are all subject to change and may be changed by SAP SE or its affiliated companies at any time for any reason without notice. The information in this document is not a commitment, promise, or legal obligation to deliver any material, code, or functionality. All forward-looking statements are subject to various risks and uncertainties that could cause actual results to differ materially from expectations. Readers are cautioned not to place undue reliance on these forward-looking statements, which speak only as of their dates, and they should not be relied upon in making purchasing decisions.